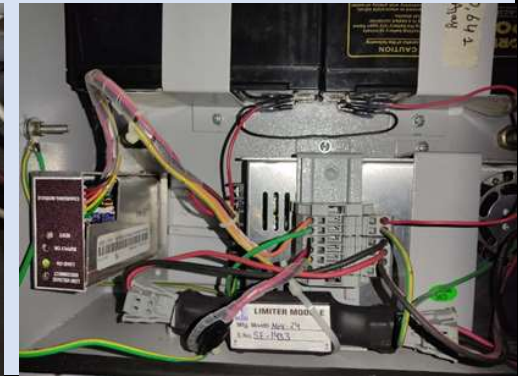
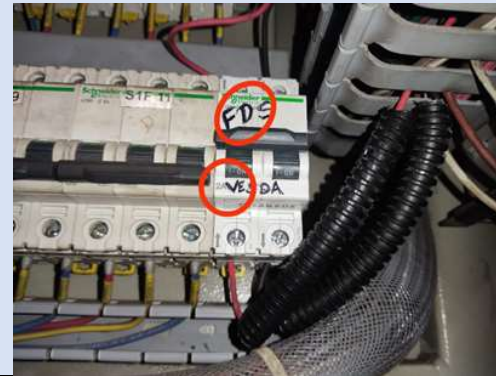



System Improvements 2024-25

I. FSDS Modifications: Double Conduiting, 2A MCB with Limiter Module



II. Load testing of RMPUs being done in AC coaches with heat load.




Proforma to Record Pull Down Test

1. Coach No. & Type	212356 / LWACCN		
2. Supply voltage	415 V		
3. Ambient temperature	29° C		
4. Electrical compensating heat load provided	16.8 KW		
5. Date of testing	17.12.2024		

Temp. rating at position 6 (i.e. 24.9° C)	Time when compensating electric load switched "ON"	Time when both plants switched "ON"	Coach Temperature when both plants switched "ON"	Time of plants rating "OFF"		Coach Temperature when both plants switched "OFF"	
				Plant-1	Plant-2	Plant-1	Plant-2
Yes	14.00 Hrs	14.03 Hrs	49° C	15.50	15.50	24.4° C	24.4° C

Temperature reading at 15 minutes time interval

Time	Temperature
14.03 Hrs	49° C
14.20 Hrs	34.3° C
14.35 Hrs	31.5° C
14.50 Hrs	30.8° C
15.05 Hrs	27.4° C
15.20 Hrs	26.2° C
15.35 Hrs	25.3° C
15.50 Hrs	24.4° C

Total time taken by both plants to switch off

PP side: 1.45 Min
NPP side: 1.45 Min

Signature of Testing-In-charge
S. P. Datta, Jr. (S. P. Datta)
Sr. Section Engineer (Elect. AC)
E. Co. Rly. Bhubaneswar

System Improvements Contd....

III. Test bench for pressurized flushing system:-

Developed in house at water pipe section in the month of Oct' 2024. Pressurized flushing cylinders are overhauled and tested in the test bench.

Suitable for testing of all makes of pressurized cylinders.



IV. TPU Fitment as per RDSO letter No. SV.FIAT Spring dated 07.06.2024

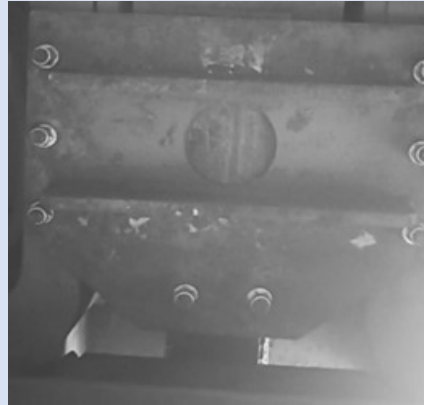


TPU ring

System Improvements Contd....

V. Modified Stiffener Plate:

Provision of stiffener plate of CBC as per revised specification of RDSO Lr.No.MC/BLB/CBC dated 28.02.2024



VI. Polaroid Simulator being used to ensure WSP system integrity.



System Improvements Contd....

VII. Bogie Manipulator Commissioned on 26.09.2024 at Bogie repair shop for best welding quality in Bogies.



VIII. Power car load test bench (Resistive load bank 500KW) commissioned on 13.12.2024 to ensure reliability of DG sets in Power cars.



System Improvements Contd....

IX. Thermal imaging camera is being used for testing.



X. Regular Technical Seminars conducted for Staff training



System Improvements Contd....

XI. Refrigerant leak detector is being used for identifying the leakage in RMPU units.



XII. Provision of Aerosol fire suppression system in the electrical panel of LHB coaches.



System Improvements Contd....

XIII. CTRB Mounting section:-

Glass sliding door have been provided with plastic Split curtains and shoe cover machine for dust free environment of CTRB mounting.

Instruction board displayed in regional language for understanding the process easily.

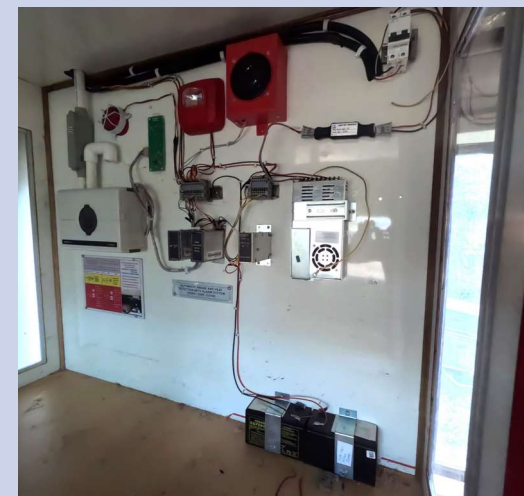


XIV. Test bench for FSDS .

Developed by inhouse

Utilised for demonstration of FSDS

Testing of FSDS parts like modules ,SMPS, display card, PA system, strobe light etc.



System Improvements Contd....

XV. Implementation of CAI regarding lavatory wash basin drain outlet pipe laying for waste water.



System improvement

**Load testing of RMPUs being done in
AC coaches with heat load.**



Advanced Practical Training of MCSW welders at World Class facilities

